



QUILT SAN DIEGO QUILT VISIONS Newsletter

WINTER 2006

President's Message

Happy New Year to you all!

2006 is going to be a Very exciting year. Quilt Visions 2006 *The Art Quilt*, opens November 12. The deadline for entries is Jan. 10. Many of your entries have already arrived and the slides are very intriguing. If your entry is not in the mail, send it today. This is going to be an outstanding exhibit of the very best examples of today's Art Quilts. Jurors, Jane Dunnewold, Lloyd Herman, and Patricia Malarcher will be here Jan. 31- Feb. 2 selecting the works for this exhibition. Jane has agreed to conduct a jurors tour of the selected work at the opening Nov. 12. She will also be giving a lecture on Sunday afternoon and a workshop on Monday Nov. 13. Other activities are still in the planning stages so watch for updates.

Since one exhibit of beautiful work is never enough, we are working hard toward the opening of the Visions Art Quilt Gallery. Scheduled for opening in the summer of 2006, this gallery is for you. It is to be a place where quilt artists can show and sell their work. A meeting place for classes, lectures, networking and inspiration. Be a part of your gallery. Get a friend to join Quilt Visions. Members have many special benefits. Become a Grand Founder, volunteer for the Community Build, send in your ideas for what you would like to see happen in the gallery. We are looking forward to working with you!

Patti Sevier, President
www.QuiltVisions.org
email: visions@QuiltVisions.org

THANK YOU!

Mary Tokumaru for the newsletter layout.
Suzanne MacGuineas for keeping the member list current and sending out reminders.
Karla Milliken for data entry/bookkeeping.



Patti Sevier, President, and Kathleen McCabe, Treasurer signing the lease with NTC Promenade on October 21, 2005.

QUILT VISIONS 2006

The Art Quilt

Nov. 11 2006 - Jan. 21, 2007

Oceanside Museum of Art

Opening Festivities—Nov 11, 12, 13

Jurors: Jane Dunnewold, Lloyd Herman, Patricia Malarcher

Entry deadline is Jan. 10, 2006

see www.QuiltVisions.org

for prospectus

Board of Directors

Patti Sevier-President

psevier@sbcglobal.net

Charlotte Bird-Vice President / Membership

cbird2400@aol.com

Kathleen McCabe

Treasurer /Coordinator for Visions Art /Quilt Gallery/ Newsletter Editor

kathleen@tongshu.com

Phyllis Newton - Secretary

rcnpan@juno.com

Robbin Neff

RobbinNeff@hotmail.com

Dee Nolan

dorotheanolan@yahoo.com

Janice Taylor

quilter40@cox.net

Sue Robertson

srobertson3@san.rr.com

Advisory Board

Will Chandler

Rosie Gonzalez

Michael James

Jean Ray Laury

Penny McMorris

David Walker

Newsletter Layout, Mary Tokumaru

AWARDS FOR QV 2006

The Quilt Visions Board is delighted to announce that the **Surface Design Association** has provided a \$500 award to be presented for the quilt that best expresses the creative exploration of processes such as dyeing, painting, printing, stitching and embellishing. The award winner will be selected by exhibition jurors Jane Dunnewold and Patricia Malarcher.

Over the years, individuals, businesses, and organizations have generously provided funds for individual awards and prizes. Quilt Visions 2006 will be no exception. The Quilt Visions Board is working hard to secure awards for presentation at the Opening Reception in November 2006. So far, **Nihon Vogue** will again sponsor the Quilts Japan Prize and **Rosie Gonzales** will select the Sponsor's Award.

A \$2,000 grant has been awarded by **Friends of Fiber Arts** to be used for the Quilt Visions Exhibition.



Message from the Gallery Coordinator

It doesn't seem like much is happening at the gallery, but that is not the case. The lease was signed in September. The streets, parking lots, and landscaping, are being completed. Building 200, the former Command Station, the new Visitor Center for NTC Promenade, is in the process of being restored already. The former library, Building 177, has been scheduled for the National Chess Championships in March, and the restoration is well under way. Luce Court has already been used for parties and receptions honoring donors and naming buildings. The San Diego City Council has approved measures that allow the entire project to go forward. If you would like to track the progress at Liberty Station and the NTC Promenade, go to www.ntcpromenade.org for the latest information on Resident Groups, construction photos, upcoming special events, and a preview of all the excitement ahead in 2006! Quilt Visions volunteers have been busy too. The Steering Committee has been formed, and will start in full force after the holidays toward the Community Build. The Exhibition Committee has met and created a proposed exhibition schedule. Dee Nolan and the Education Committee have been forming a program to take to school children, and Jill Le Croisette, the Director, has been planning the library/resource center design and how that will be best utilized by our members and collectors alike. Bob Leathers has the design for the gallery, office, and gallery store interior well underway, offering flexibility as we use the space and adapt to the needs in the first year after opening. Countless hours have gone into gathering more volunteers and in making presentations at the San Diego Quilt Show and various

guilds and groups. More of these are scheduled for the coming months, including Road 2 CA. Contact the office if you would like to schedule a presentation for your guild. As much as has been happening, there is that much more still to be done. In January, the folks at NTC will give us a definite date for us to schedule our Community Build, which presently is expected to be in mid-July. We need you to contact all your family and friends to come to this momentous event and actually build the gallery. Some will check out tools, offer their homes, provide food or child care. It will be a week of tremendous fun and sense of accomplishment. We will create a gallery built by and run by people like you! Join the fun!

Kathleen McCabe, Coordinator
Visions Art Quilt Gallery

ROAD TO CALIFORNIA January 19-22, 2006

Carolyn Reese, owner of Road to California, has graciously offered Quilt Visions the opportunity to tell the quilting community all about our upcoming Visions Art Quilt gallery. We will have a place outside the exhibit hall where the opportunity quilts are shown. The dates of the show are January 19th through 22, Thursday to Sunday. We need volunteers to be at the booth and talk to visitors about our upcoming gallery, sell catalogs and tote bags, and tell people about the Visions 2006 Exhibition at the Oceanside Museum of Art. As we spread our enthusiasm, support and excitement builds. Many of you are going to Road 2 CA already. Please consider spending a couple of hours at the booth to help spread the word. Be sure to at least stop by the booth and say hello!

Please call right away and tell us what day and hours you can help out.

Kathleen McCabe kathleen@tongshu.com
Patti Sevier visions@quiltvisions.org
858-484-5201

Festivities Planned for Opening Weekend of Quilt Visions 2006 in November — Save these dates —

Juror Jane Dunnewold will be joining the party for the Quilt Visions 2006 opening weekend, November 11-13, 2006. She will attend the Opening Reception on Saturday evening, November 11. On Sunday, November 12, she will conduct a Juror's Walk Through of the exhibition and briefly talk about work in the show. Later on Sunday afternoon she will give a lecture (subject to be announced).

On Monday Jane will conduct a wonderful one day workshop/demonstration, THE MOST ELEGANT CHOICE -- Decision Making and the Artistic Process. In this exciting workshop/demonstration Jane will talk about layering and the complexities and complications of color and dye. She will show a lot of pieces and talk about them as examples of how to make choices of process and layering in making art cloth. Jane is the author of *Complex Cloth* (1996) and *Improvisational Screen Printing* (2003). Her quilts and art cloth have won awards all over the world, including *Visions* (1992) and the Taegu Textile Exhibition (Taegu, Korea, 2001). She teaches internationally and maintains Art Cloth Studios in San Antonio, Texas.

The workshop will be limited to 30 participants and preference will be given to members of Quilt Visions. The fee has not yet been determined. Stay tuned for sign up instructions for the class.

GUILDS & GROUPS

Quilt Visions will be happy to make presentations to your guild or group, talking about art quilts and the Visions Art Quilt Gallery. We are eager to tell as many of you about it as will listen! Please call or email the office, and we will be happy to schedule something that works for you!

visions@quiltvisions.org
858-484-5201



Members in the News

Jill Le Croisette's quilt "Lines III" was shown in *Fine Art Quilts 2005*, Jay Etkin Gallery, Memphis TN, 8/19-9/9, 2005. Her quilt "Ripening" won the Award for Theme Interpretation at Rural Roots and Mysteries, Aullwood Audubon Center, Dayton OH, 2005. Other quilts of hers will appear in *The Fibers of Your Life*, Grants Pass Museum of Art, Grants Pass OR, 10/8-11/26, 2005; *Quilts for Arts Sake 4*, Gallery 214 Art Space, Monclair NJ, 11/18/05-1/2/06; *Contemporary Art Quilt: The Best of California Quilts*, Santa Barbara Historical Museum, Santa Barbara CA, 2/10-/4/16, 2006.

Kristine Kadlec entered three items in the 2005 Los Angeles County Fair and won ribbons for all three. *Ordinary Obsession* is a crazy quilt wearable art vest which won a first place ribbon. Her crazy quilt placemat won fourth place. And her crazy quilt Barbie doll outfit (see right) won first place Best of Show.

Fiber artist **Barbie Swanson** had two pieces juried in the Art League of North Florida. One of them, *AT REST*, won a special memorial award. It was the only fiber piece to win any award. This was the first multimedia art show she has entered.

The Studio Art Quilt Associates, Inc. (SAQA) Professional Artist Members (PAM) exhibit *On The Wall*, includes entries by **Marilyn Gillis**, *Archipelago*, and **Charlotte Bird**, *Fruiting Body #1* and *Composition #32: Red Diamond*. This exhibit of 67 pieces by 52 artists will be displayed at the Gallery of Contemporary Art on campus at CU Colorado Springs from January 13 through March 17, 2006.

Charlotte Bird, *Composition #5 Garden X*, and **Jill Le Croisette**, *Hate is Expensive*, are included in *Fine Focus 06*. The venues for this show include Paducah, KY, Chicago, IL, Coos Bay, OR, Cornell and Old Forge, NY.

Suzanne MacGuineas has been accepted into *Art Quilts at the Sedgwick* in Philadelphia, PA in April and May.

Art Quilts at the Adobe is on show until January 7th, so stop in if you are in the Vista area, Wed-Sat. 10-3 pm.

Members are invited to submit notices of their work winning awards or being displayed. Please include a photograph, when possible. Notices will be included on a space-available basis.



Kristine Kadlec's crazy quilt Barbie outfit won First Place, Best of Show, LA County Fair

CALLS FOR ENTRIES

- Jan 10, 2006 Visions www.quiltvisions.org or PMB#372 12463 Rancho Bernardo Road, San Diego, CA 92128
- Jan 16, Small Expressions, www.weavespindye.org or hga@weavespindye.org
- Feb.6, Culture and Agriculture 2006, newvisions.gallery@verizon.net
- Feb.10, open call for artists, and for curatorial proposals, www.artsceneteronline.org or call 518-273-0552, Ext. 222
- Feb.14, Combined talents, www.mofa.fsu.edu/combinedtalents
- Feb. 15, 2006 download from www.lowertownquiltwalk.com
- Mar.11, 2006 Southworks, www.ocaf.com
- Mar.31, juried multimedia art exhibit. www.vmrc.org
- July 1, Surface Tension, e-mail photoquilt@aol.com
- Aug.18, Fiberart International 2007, www.fiberartinternational.org

WELCOME NEW & WELCOME BACK

(As of 1/5/06) More memberships arrive daily. Thank you!

Patricia Gould
Sue Prun
Flying Geese Quilt Guild
Beach Cities Quilt Guild
Glendale Quilt Guild
Robert Shaw
Jill Le Croisette
Carla Daria Degiampietro - Delvai
Peg Keeney
Grace Errea
Linda Colsh
Michelle Verbeeck
June Underwood
Marilyn Chaffee
Lucy Slater
Susan Leslie Lumsden
Therese May
Susan Trindle
Sue McMahan
Jeanne Beck
Karen Cunagin
Janet McIntyre
Mary Tokumaru
Joan Deuel
Cynthia St Charles
Janet Reyman
Pamela Grammer
Akiko Suzuki
Anja Townrow
Maggie Turner
Joan Sowada

Paula Koch
Dorothy McRann
Linda S. Kamm
Lee Anne Davis
Mary Tabar
Janice Pennington
Nelda McComb
Marcia Binkert
Kathy Amberson
Sandra Durbin
Jennifer Lynch
Sylvia T. Clark
Ann Olsen
Patricia Ann Chittenden
Jeannie Moore
Sally Biggerstaff
Merilyne Hickman
Barbara Friedman
Memory Susan McGovern
Carol Anne Boshell
Jane Takahashi
Janice Benavidez
Linda Blue
Patty B. Smith
Janice Taylor
Betty Ann Heineman
Joan Hamilton
Barbie Swanson
Marlena Asprey
Denise Linet
Heidi Stegehuis-Ihle
Harue Konishi

Marilyn Henrion
Kathryn Botsford
Jo-Ann Golenia
Julia Zgliniec
California Fibers
Rita McCabe
Kathy Weaver
Zannah Martin
Sharon Bell
Carol Taylor
Valerie Goodwin
Barbara McKie
Scott Murkin
Lisa Chipetine
Monica Jenicek Lyall
Pamela Fitzsimons
Joan Schulze
Fiona Wright
Cathryn Zeleny
Ree Nancarrow
Wendy Slotboom
Marie Castle Wing
Peggy Brown
Karin M. Lusnak
Gwyned Trefethen
Adrienne Lindsay
Julie Bubar
Suzanne Wray
Bente Vold Klausen
Rose Rushbrooke
Judy Jordan
Carolyn Carson
Jo AnnCzekalski

M
E
M
B
E
R
S
H
I
P

M
E
M
B
E
R
S
H
I
P

DO YOU HAVE A WEBSITE?

If you are a Visions Member and have your own website, we would love to put a link on the Quilt Visions website. We also hope that you will reciprocate with a link to www.quiltvisions.org

Send your link to suzanne.56@cox.net



Grand Founders

Quilt Visions thanks our Grand Founders. This money will make it possible to operate the gallery for the first two years while we establish an income. These names will be inscribed permanently on the "Founders Wall" in the gallery. Our goal is \$100,000.

- Lynne Benlatreche * \$2,000
- Del Thomas * \$1,200
- Dr. Robert and Rebecca Barr
- Regina Benson
- Charlotte Bird
- Margrette Carr
- Noriko Endo
- Louise Goodman
- Rosie Gonzalez
- Janeene Herchold
- Misik Kim
- Tricia Klem
- Jill and Dennis Le Croisette
- Suzanne MacGuineas
- Kathleen McCabe
- Rita McCabe
- Phyllis Newton
- Dan Olfe
- Susan and Stephen Root
- Sue Robertson
- Annemarie Sprinkle
- Lisa Tan
- Bonny Tinning
- Beach Cities Quilt Guild
- California Fibers
- Flying Geese Quilt Guild
- Glendale Quilt Guild
- Piecemakers \$500
- Jo Diggs \$500
- Julia Zgliniec \$500
- Jane Einhorn * \$200

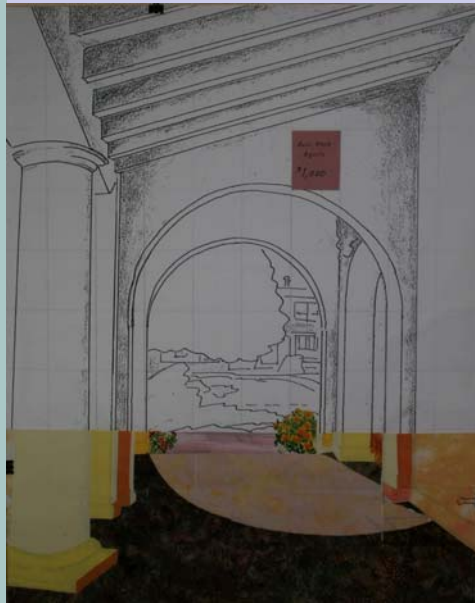
Pledges: \$2000

*Several donations have been sent to combine with Jane Einhorn to create another Grand Founder.

Collected for Visions Art Quilt Gallery

\$30,254.00

Grand Founders Quilt



As Ground Founder and other donations are received, another color block is added to the "Grand Founders Quilt." We can see our dream become a reality as the blocks fill in! Donations are now more than \$30,000 received, and we also have several pledges!

HELP WANTED!

We need a person to assume the duties for public relations. There is already a contact list, an outline of publicity needed, and suggestions of topics for news releases. We need someone to execute these tasks in a timely manner. Please contact us right away if this interest you. It will take all of us to make our dreams come true.

Grants are a major source of funds for any arts organization. The money is there, it just needs to be applied for. Please help. We have some preliminary work done toward this effort, but it needs a person who can concentrate on it and meet the deadlines.

CONTACT PATTI SEVIER AT
visions@quiltvisions.org
or call **858-484-5201**

Membership: The Backbone of Our Organization

It is the goal of Quilt Visions to increase membership to 1000 members by the end of 2006. We are growing rapidly, and with the Visions Art Quilt Gallery, membership will have many more benefits and attractions. There will be an annual juried membership exhibit, opportunity for members to sell artwork in the gallery store, membership gatherings for discussion, slide shows, demonstrations, critique of artwork, along with 5-6 exhibitions a year. Please keep your membership current, and better yet, consider renewing at a higher level!

Individual	\$25
Individual, 2 year	\$40
Supporter	\$50
Associate	\$100
Benefactor	\$250
Patron/Sponsor	\$1000
Grand Founder	\$1000

Renewing is easy. Send your check to

**Quilt Visions PMB #372
12463 Rancho Bernardo Road
San Diego, CA 92128
858-484-5201**

Or renew online

www.quiltvisions.org

Be sure to include your name, address, phone number, and email.

FUNDRAISING

We a chairperson to head the Fundraising Committee. If we put our minds together, there's no limit to what we can accomplish. I'm full of positive energy and we have such an awesome project to work towards. It will happen, and it's up to all of us to pitch in with whatever skills we can contribute to reach our \$100,000. goal. Call the office to tell us how you will help!

858-484-5201



Gallery Design

Bob Leathers has been working on the design with input from interested members. Jill LeCroussette has defined some parameters for the library and resource center, and the Board and other interested members brainstormed about the requirements of the gallery, office, and general uses for the space over time. Presently the plans call for a conference/work room which would include a design board and a pull down screen. A large table will seat 12 and a window will provide natural light. A sink and refrigerator, along with storage will be incorporated into this room. There is additional storage space for large items including folding tables, chairs, ladders, and packaging crates.

The office will provide up to three work stations. A large area for the library/resource center has been designated, allowing flexibility as we see how the center is used. Several work stations along a counter for viewing of the materials runs along the wall.

The layout for the gallery store will be adjustable according to the merchandise displayed at any given time. A reception desk will be centrally located in order to be seen from both entrances. In the gallery space itself, a flexible wall system will be used. Removable panels, four feet wide, will be built which can be moved to create walls, backdrops for the art quilts, dividers for lectures and or slide shows and small workshops, or removed all together to create one very large open space. They will be attached at the top and the bottom for sturdiness.

The ceiling will most likely be a grid system which allows flexibility in lighting and also a way to suspend art quilts from the ceiling.

The entire interior of the gallery will be constructed during our Community Build. Bob Leathers, in his 35 year career as an architect, has facilitated over 1900 similar projects. His firm established a guide book describing all the steps and procedures to success. The construction costs are a fraction of

what they would otherwise be. Another strength of a Community Build is that the participants feel a sense of ownership and do everything that they can in the future to insure the gallery is a success. The camaraderie and community feeling is second to none.

Paramount in this is getting all materials and labor donated. Suzie Hammond has volunteered to head the committee for donated materials. As the design firms up, Bob will provide a detailed list of the supplies needed.

We will also need to furnish the interior of our gallery. Many of you probably have access to lots of the items we will need. Frequently we come across someone saying "If I had only known—I just threw that away!"

The list below is an example of the kinds of things we will need. We are asking all of you to notice what you have—please do not throw away things that have a potential use here. We can store them, just call the office and we will arrange to pick them up. Remember, this is just a sample list. If you can perceive any use for an item, please tell us about it.

- Refrigerator
- Microwave
- Sliding doors
- Doors
- Windows
- Folding table and chairs
- Computers and monitors
- Shelving
- Bookshelves
- Hardware
- Display shelves or cabinets
- Lighting fixtures
- Slide projector and screen
- Copiers
- Printer
- Office furniture
- Easels
- Storage containers
- Counter tops,
- Cabinetry (pulled out in a kitchen remodel)

Anything—just ask if not sure!



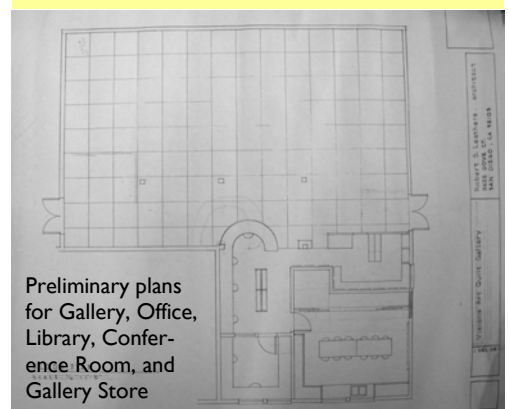
Steering Committee

Fifteen gathered in the home of Kathleen McCabe to discuss plans for the upcoming Community Build. It now looks like the date will be in mid July to gather together and build the gallery. Everything has been dependent on the NTC Foundation's ability to secure funding for the historic renovations of the buildings to go forward. They are now waiting for the approval of their building plans.

Forming the steering committee is the first part of the Community Build. The following people have volunteered to be part of that committee. They will put aside other priorities to make the community build number one.

Grant Writing and Public Relations still need volunteers, and all of the above named committees will need more volunteers to aid in each area. Lots of information has been gathered but needs to be implemented. Fundraising will also be paramount. Please consider where you can help out and step up to the plate as these people have done. The pride in the finished gallery will be well worth all the time and effort.

Architecture & Building Bob Leathers
General Coordinators: Kathleen McCabe
Community Build Vol. Suzanne MacGuinneas
Donated Materials Suzie Hammond
Food Coordinator Joan Hamilton
Purchased Materials Harry Benedict III
Tools Coordinator pending
Needed: Fundraiser & Grants, Public Relations



Preliminary plans for Gallery, Office, Library, Conference Room, and Gallery Store



Community Build

The Community Build will be an enormous undertaking, requiring the time and energy of countless dedicated volunteers. Bob Leathers, quilter and internationally known architect, has facilitated in numerous community builds. In fact, his company has completed about 1900 of them in the last 30 years!

I was traveling this Fall and found myself in Ithaca, NY, Bob's "other" home town. In fact, I stopped in the quilt shop where he took his first quilting class.. he has completed numerous Community Build projects in Ithaca alone, and I was directed to some of them, by people I met at the quilt shop.

The most interesting to me was the Science Center. It is a huge facility, built in a formerly derelict city building which had to be taken down to the bare bones for this transformation. It is now a thriving Center for Children to visit, have classes, school field trips, engage in a multitude of activities, and learn about science. Some of the displays and activities were so interesting that I could hardly get my husband out the door!

Bob tells me this project would have cost in the neighborhood of \$1,000,000 or more if built in the conventional way with paid professionals and laborers. However, through the Community Build they were able to complete the project for \$10,000 --- ONE PERCENT of the actual cost!

I found the Director while I was inside, and introduced myself. I told her that Quilt Visions was working with Bob Leathers on a Community Build and that I was a little apprehensive and wanted to see for myself one of his completed projects. On the mention of Bob's name, her face lit up and she had a huge smile. "That was so much fun," she said. She told me that they built the entire thing in two weekends. She said that Bob's people were very helpful and directed the construction when it came to that. She had a major role as the coordinator for donated materials. She wrote to every construction company, hardware store, plumber and electrical supply place... large and small companies alike. And the donations really did come in! Other members of the steering committee likewise did their part, and the entire project was a glowing success!

I was not allowed to take interior pictures because of the children present, but I did take a couple shots from the outside. See for yourself what the possibilities are! We WILL make this happen!



Science Center in built in Community Build

Mission Statement Visions Art Quilt Gallery

The Visions Art Quilt Gallery is a not-for-profit international gallery and study center, featuring the works of established and emerging fiber artists. Through rotating exhibitions, education programs, and a permanent library, the gallery will be the definitive resource for quilt artists, collectors, and enthusiasts. Visitors will have the opportunity to view and purchase art works representing this contemporary fine art medium.

CHESS ANYONE?

We will be participating in our 1st NTC event for Families! The NTC Foundation is hosting the elite **U.S. Chess Championship**, the country's only world-class competition for the game's foremost U.S. players. www.uschesschampionship.com. The *San Diego Chess Fest*, from March 1-12th, invites families from all over to participate.

On Saturday, March 4, kids and families can participate in special events, interactive games and join the excitement of the chess experience. Some of the planned activities including celebrity chess matches, dancers performing live chess games, puppet making, and "Kids Simul"- U.S. Championship Grandmasters play hundreds of K-12 children!

Quilt Visions will be sponsoring a hands-on, art-quilt related activity booth on March 4th. This will be fun for all involved and is a great way to introduce the public to the Quilt Vision organization. I invite you to come and join us for a day of fun and creating. This is also an opportunity to check out the new home of Quilt Visions and all the progress that has been made at the Promenade! Join us as our dream of a new home for Quilt Visions becomes a reality.

Please call to volunteer and for further details. I look forward to hearing from you,

Dee Nolan
Education/Volunteer Co-Coordinator
(760) 742-4211
dorotheanolan@yahoo.com

Gallery Exhibition Committee

The Exhibition Committee met at the home of Suzanne MacGuineas on Friday, December 15th to discuss the exhibition schedule for the Visions Art Quilt Gallery. Many types of exhibitions were discussed, and as time progresses, we will see how each is received, and plan our future exhibits accordingly. Exhibitions include, but are not limited to, showing a "Collection" of art quilts accumulated by one person, a solo invitational, a 3-5 local artist invitational, 3-5 international artists invitational, a juried QV Members show, and a group show from another fiber related organization. We also discussed the possibility of doing a former QV juror's invitational and retaining a "pre-packaged" exhibit and charging a minimal admission to cover the cost of it.

As the exhibition schedule firms up, and the various artists and groups are notified and accept, the Exhibition Schedule will become available. Check our web site for all updates. www.quiltvisions.org



Member's Art Discussion Group January 28, 10-noon

As a result of the Quilt Visions exhibitions at the Ocean-side Museum of Art, there were a number of people who expressed an interest in learning more about art quilts. So on September 10th, a group of 47 people participated in a meeting sponsored by Quilt Visions to talk and share about this art form. There were lively discussions about what constituted an "art quilt" and how to learn more. Quilts were brought for sharing and much enthusiasm was generated for another meeting. A yummy salad lunch was provided by Quilt Visions.

On October 29th, the second meeting was held. Slides of past Quilt Visions exhibitions were shown with Julie Zgliniec moderating. The progress of the new Visions Art Quilt Gallery at NTC was reported. A written survey was well received with questions about programs, goals, dues and an opportunity for people to volunteer with classes and locations. And there were many suggestions for a name for the group.

It was decided that, for now, future meetings at the Carmel Valley Library would be held on the last Saturday of the month. Bring a sack lunch on January 28th if you would like to stay for further discussions. A program will be provided by Ann Olsen and Bob Leathers on principles of design such as line, color, space, repetition, contrast, balance, and focal point. Those of you who are planning to attend are invited to bring a piece of your own that you think demonstrates one of more of these principles. Or it could be a piece of work (or work in progress) that you feel is missing something and you are not sure what. The discussion of these pieces is not intended to be a critique, but an exercise to better understand these elements of design in order to incorporate them into our own creative processes. See you on the 28th!

QV ART DISCUSSION GROUP (name???)

January 28th, 10 – noon

(bring a sack lunch)

Carmel Valley Library

3919 Townsgate Drive, San Diego

(exit 5 onto Del Mar Heights Rd east,
right onto El Camino Real, left onto Townsgate)

For more info: 858-484-5201

**The Quilt Visions Newsletter
now accepts advertising.
Contact the office for details.
visions@quiltvisions.org**

THE QUILT VISIONS EXHIBITION COMMITTEE

After discussion in the Strategic Planning Retreat, Quilt Visions has determined that restructuring our organization is needed. A new Board of Directors position has been created. The Chairperson of the Exhibition Committee will oversee the tasks needed to continue to hold the quality biennial Quilt Visions exhibitions for which we have become well known in the art quilt community.

The Exhibition Committee has developed procedural manuals for all the parts of the Exhibit planning. These procedures are constantly updated and improved with each year. They include

- **Publicity;** getting the call for entries publicized in a timely manner, along with overseeing the publicity of the Exhibition itself. This involves working with OMA to see that we do not overlap in our efforts, but at the same time, that nothing gets left out
 - **Sponsorship;** contacting and follow through with sponsors for the Exhibition
 - **Data entry;** as entries arrive, the data must be entered accurately and slides placed in the slide trays.
 - **Jury Committee,** which includes transport of jurors to and from the airport, making travel arrangements for the jurors, and facilitating the jurying over a three day period (all or part of these.)
 - **Graphics and design** of the catalog, which involves the layout of the self published catalog, meeting very stringent deadlines to assure delivery in plenty of time for the opening.
 - **Editing** involves several rounds of proofing the catalog prior to publication
 - **Programs;** this involves planning programs in conjunction with the opening. This may be lectures by Quilt Visions artists, panel discussions, or any related subject that will add to the attraction of the Quilt Visions Exhibition overall. The success of these events requires planning ahead, reserving space, and publicizing the event in appropriate ways.
 - **Artist Breakfast** is given for the visiting Quilt Visions Artists, sponsors, and related guests.
 - **Education;** working with OMA to develop the materials for docenting the exhibition.
 - **Volunteer Coordinator** schedules "white glove" volunteers to sit the gallery during the exhibition.
 - **White Glove and Docents** are needed during the exhibition. The Docents receive some training, facilitated by OMA, and the "white glove" volunteers protect the art against touching, and answer questions when they arise.
- If any of these areas interest you, please contact Patti Sevier at visions@quiltvisions.org and see how you can best assist. Remember, do not over commit. Chose an area that is comfortable to you.



MISSION STATEMENT

Quilt San Diego/Quilt Visions is a not-for-profit international arts organization dedicated to the promotion and appreciation of the quilt as art.

The organization will achieve its purpose by establishing a world-wide network of dedicated members, advisors, associates and affiliates that will:

Organize and stage exhibitions of outstanding quilts in museum quality settings,

Present workshops, lectures, a contemporary quilt registry and related activities to its members, world art community and general public.

Promote presentations and discussions of the quilt as art in leading international art, quilting and general circulation media and

Encourage and promote quilting of the highest esthetic and artistic quality.



Catalog/CD combo

Quilt Visions 2004	\$27.95
Quilt Visions 2002	\$19.95
QV 2004 Tote-Bag	\$17.95

Calendar of Events for Visions 2006

Jan 10	Deadlines for entries to <i>QV 2006</i>
Jan 19-22	<i>Road to California</i> in Ontario, CA
Jan 28	Art Quilt Discussion Group meets 10-noon
Jan 31- Feb 2	Jurying of art quilts for <i>Quilt Visions 2006</i>
Feb 15	Notification to artists about selected work
March 1-12	<i>San Diego Chess Fest</i> at NTC
March 27	Quilts due for photography
July	Projected time for Community Build
September	Projected opening for Visions Art Quilt Gallery
Nov 11, 12, 13	Opening Events <i>Quilt Visions 2006</i>



Quilt San Diego / Quilt Visions

PMB #372 12463 Rancho Bernardo Road

San Diego, CA 92128-2143

Phone: 858-484-5201

Email: visions@quiltvisions.org

www.quiltvisions.org